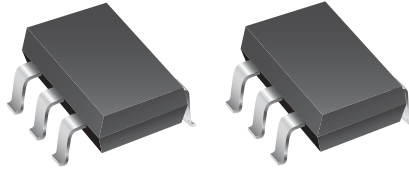


# Product Change Notification

## CHIP DIODES



February, 2014

### **Additional Assembly/Test Location for SOT23-6 Packages ~ Model **CDSOT23-SRV05-4** Steering Diode TVS Array Combo and **CDSOT23-SR208** Steering Diode Array**

In order to support our fast growing demand and assure continuity of supply while providing maximum flexibility to our customers, Bourns is adding an additional assembly/test location in Thailand for the assembly/testing of the 6-pin SOT23 (1.65 x 2.9 mm) package (JEDEC SOT23-6) for Diode Array products.

Currently, Bourns manufactures these devices in the Philippines. Assembly of product at the newly added Thailand location will begin in May, 2014. There is no change to the form, fit or function of the product. The product marking and label are unchanged except for the country code information. The labels will show the country of origin code. Unless your company has been notified otherwise by Bourns, deliveries of such products may occur 90 days after the date of this notice.

Evaluation samples and qualification data are available upon request. For clarification, beginning June 1, 2014, customers may receive such products from either the Philippines or Thailand.

Implementation dates are as follows:

*We will begin phasing in this process: May, 2014*

*Date that deliveries of product from the additional location will begin: June 1, 2014*

*First date code using the above changes: 1414*

If you have any questions or need additional information, please feel free to contact [Customer Service/Inside Sales](#).